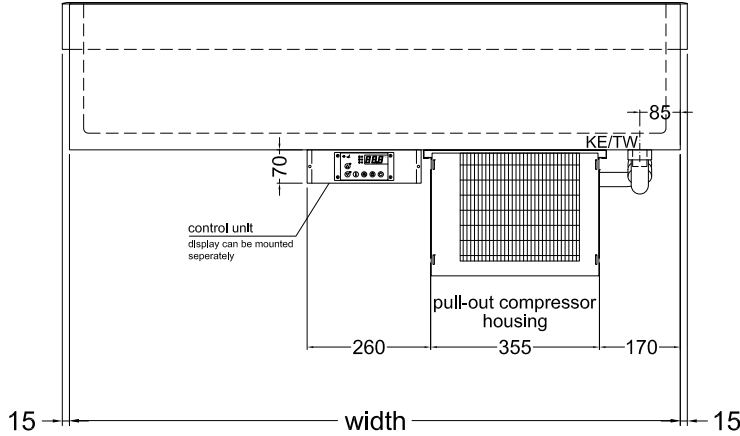
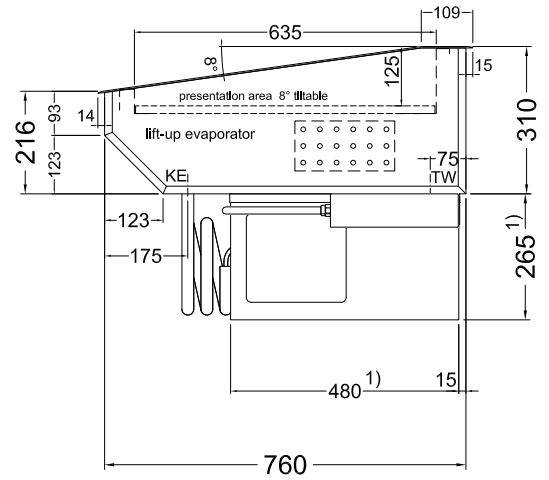


SELF-CONTAINED (remote refrigerated = w/o condensing unit)

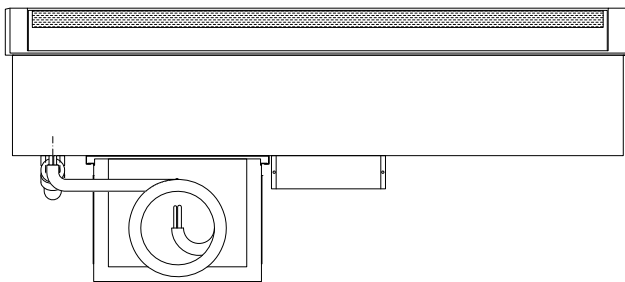
(operator side)



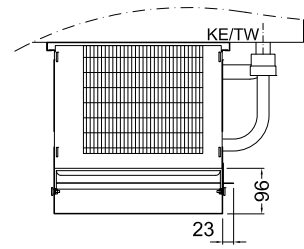
(side elevation)



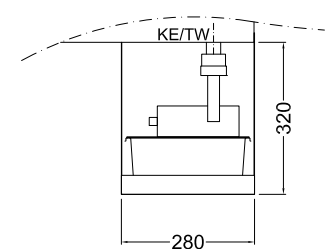
(customer side)



As an option:
condensate evaporation
by means of hot gas



As an option:
Electrical condensate
evaporation tray (1000 W)
(for remote refrigerated models)



TW = Drain DNØ30
KE = Cooling/Electric

1) "BAKERY S 4-E": dimensions of compressor housing are (WxDxH) 370 x 520 x 310 mm

ACCESSORIES AND OPTIONS

Condenser protection		253 610	103,-
Electrical condensate evaporation tray, 1000 Watt		190 220	809,-
Version with electronic expansion valve, for remote refrigerated models			on request
Without control unit for remote refrigerated models	price reduction	253 657	-292,-
Condensate tray		253 655	103,-