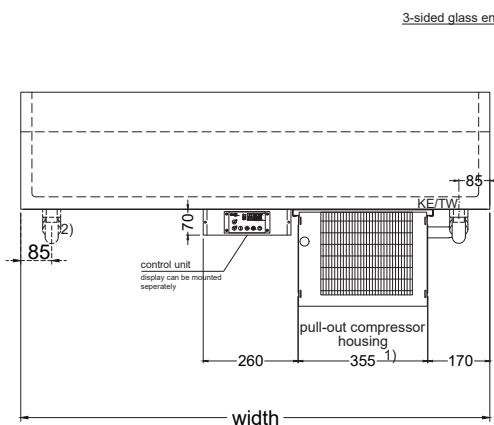


**SELF-CONTAINED** ( remote refrigerated = w/o condensing unit )

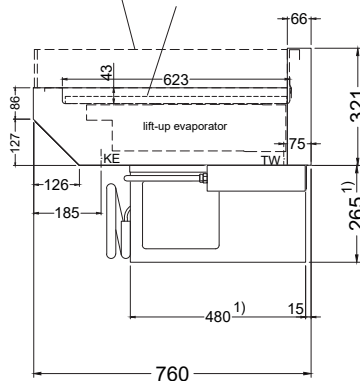
(operator side)

(side elevation)



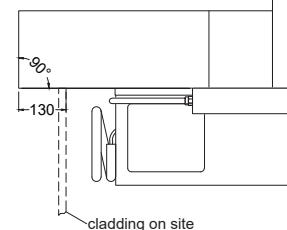
3-sided glass enclosure required (has to be made on site)

as an option:  
tiltable base decks

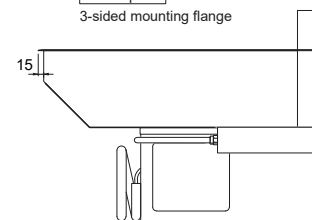


**Version "PRO"**

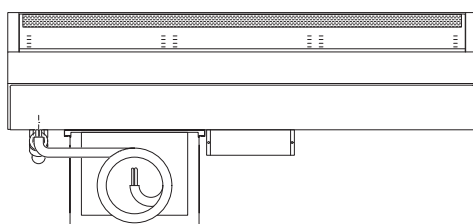
All visible sides are  
satin-finished! For overhanging  
installation on customer side.



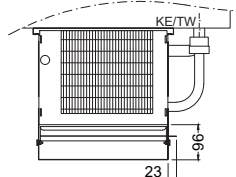
as an option:  
3-sided mounting flange



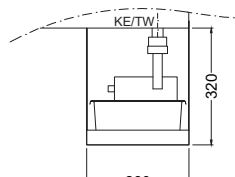
(customer side)



As an option:  
condensate evaporation  
by means of hot gas

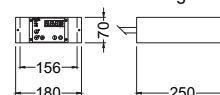


As an option:  
Electrical condensate  
evaporation tray (1000 W)  
(for remote refrigerated models)



TW = Drain DNØ30  
KE = Cooling/Electric

control unit for remote refrigerated models:



- 1) as of "BAKERY H 4-32-E": dimensions of compressor housing are (WxDxH) 370 x 520 x 310 mm  
2) "BAKERY H 5-32" includes an additional drain on the left side end

## ACCESSORIES AND OPTIONS

|                                                                         |                 |         |            |
|-------------------------------------------------------------------------|-----------------|---------|------------|
| Base deck 400 x 600 mm, straight - for Bakery                           |                 | 253 679 | 71,-       |
| Mirror on the discharge side                                            |                 |         | on request |
| Version with electronic expansion valve, for remote refrigerated models |                 |         | on request |
| With 3-sided glass enclosure                                            |                 |         | on request |
| Without control unit for remote refrigerated models                     | price reduction | 253 657 | -292,-     |
| Condensate tray                                                         |                 | 253 655 | 103,-      |