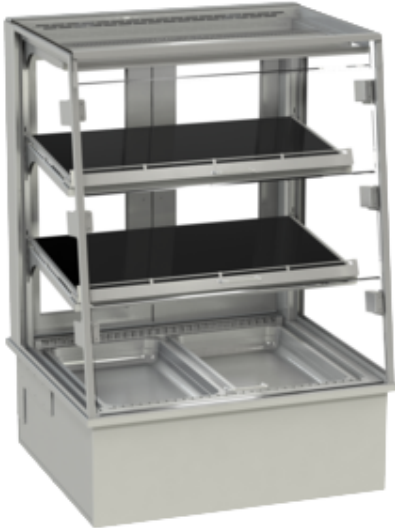


## Tropical Switch Flaps 80-87-Z Switchable disp. case w. flip-up d. - remote refr.



**€13,343.00**

plus VAT

**Item no.:** EU539936



- Self-service display case with switch function for quick switchover possibility between cold and hot operation – optimally matched to 24/7 operation
- Display case that can be used in a variety of ways for the presentation of cold or hot snacks on multiple levels
- No condensate formation on the soft-close removal flaps thanks to the integrated window ventilation (double air-curtain)
- Heating mode: With infrared supporting heat and primary heat below the black glass presentation area – settable by means of pictogram control
- Cooling mode: Air-curtain cooled display case for the best-possible energy efficiency in ongoing operation, temperature control by means of a control unit with temperature display,
- Inclined positioning of the intermediate shelf made of black glass for first-class view of the product assortment and optimum temperature transmission to the products
- Soft-close removal flaps made of tempered safety glass with integrated soft-close system for convenient food removal; optimum spit and cough protection and the best energy efficiency
- Hinged door on operator side made of insulated glass with two-way mirror
- Side windows made of insulating glass
- Transparent construction
- Long-lasting LED lighting per level
- Easiest cleaning and perfect hygiene
- Remote refrigeration: expansion valve R134a, connection lines lead out downwards, drain required on-site for remote refrigeration, control unit (250x185x175mm) and display cover (290x70mm) loose

Typing and database errors reserved.

**IDEAL Kältetechnik GmbH**

📍 In der Schörihub 28, 4810 Gmunden, AT

☎ +43 7612 660 61

✉ office@ideal-ake.at

**AKE Ausseer Kälte- und Edelstahltechnik GmbH**

📍 Pichl 66, 8984 Bad Mitterndorf, AT

☎ +43 3624 211 00

✉ office@ake.at

## Temperatures COLD:

Product temperature: -1°C to +5°C (Class M1)

Air temperature: +2°C

## Temperatures HOT:

Product temperature: &gt; +65°C

Connected load: 1620 W - 230V/50Hz

Refrigeration capac.: 600 W at ET -8°C

Dimensions (WxDxH): 800 x 710 x 870/1130 mm

Width:	800
Depth:	710
Height:	1130
Version:	Z
Installation Opening width:	780
Installation Opening depth:	670
Power input hot:	1,73 kW
Annual energy consumption kWh:	1788,5000
Energy efficiency index:	36,2595
Voltage volt:	230
Frequency Hz:	50
Refrigeration :	R134a
Cooling capacity:	590 Watt at VT -8°C
Energy efficiency class :	D
Temperature class:	H1 +1 +10
Energy consumption kWh 24h:	4,9000
Refrigerated display case Climate class:	3
Standard:	EN ISO 23953-2

Typing and database errors reserved.

**IDEAL Kältetechnik GmbH**

📍 In der Schörihub 28, 4810 Gmunden, AT

☎ +43 7612 660 61

✉ office@ideal-ake.at

**AKE Ausseer Kälte- und Edelstahltechnik GmbH**

📍 Pichl 66, 8984 Bad Mitterndorf, AT

☎ +43 3624 211 00

✉ office@ake.at