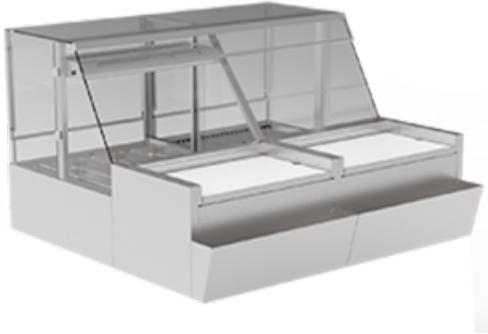


SNACKY Bistro-Z SNACK Line - remote refrigerated



€17,150.00

plus VAT

Item no.: EU536101

- Fresh preparation, immediate service and product stocking in the smallest space
- Hot and cold area combined in one unit
- Heated display case: 3 heat sources in one unit – pictogram control for humidity, infrared supporting heat and primary heat
- Visual and acoustic indicator of water requirement; easy to top up the water tray without removing the product
- Refrigerated display case: Energy-efficient air-curtain cooling for optimum product temperature
- Use as display case with service or for self-service through slide-in front glass
- Glass cover made of tempered safety glass
- Stocking of cold as well as hot ingredients under the pull-out cutting boards for optimum reaction to the individual food requests of your customers
- High-gloss polished inside for mirror effect
- Long-lasting LED lighting per area
- Varied presentation of the food through different accessories such as GN trays and decorative inserts
- Remote refrigeration: Expansion valve R 134a, lines lead into the base, drain required on-site

Temperatures COLD:

Product temperature: -1°C to +7°C (Class M2)

Air temperature: +5°C

Temperatures HOT:

Product temperature: > +65°C

refrigeration capac.: 450 Watt at ET-10°C

Connected load: 1550 W – 230V/50Hz

Dimensions (WxDxH): 1170 x 1015 x 1255 mm

Typing and database errors reserved.

IDEAL Kältetechnik GmbH

📍 In der Schörihub 28, 4810 Gmunden, AT

☎ +43 7612 660 61

✉ office@ideal-ake.at

AKE Ausseer Kälte- und Edelstahltechnik GmbH

📍 Pichl 66, 8984 Bad Mitterndorf, AT

☎ +43 3624 211 00

✉ office@ake.at

Width:	1170
Depth:	1015
Height:	1255
Version:	Z
Power input cold:	1550 Watt
Voltage volt:	230
Frequency Hz:	50
Cooling capacity:	450 Watt at VT -10°C

Typing and database errors reserved.

IDEAL Kältetechnik GmbH

📍 In der Schörihub 28, 4810 Gmunden, AT

☎ +43 7612 660 61

✉ office@ideal-ake.at

AKE Ausseer Kälte- und Edelstahltechnik GmbH

📍 Pichl 66, 8984 Bad Mitterndorf, AT

☎ +43 3624 211 00

✉ office@ake.at