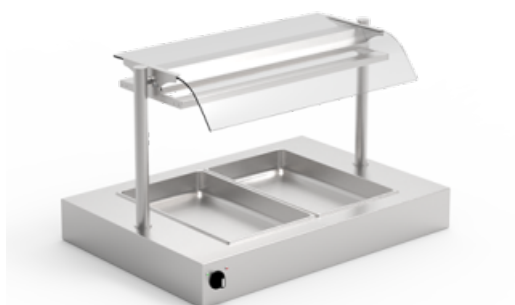


## HM GN 2-1 with WB HS-2-1-45 well / cough guard combination



**€4,668.00**

plus VAT

**Item no.:** EU535375

### Well / cough guard combination

Completely made of stainless steel all visible sides polished

Recessed well with hotplate (primary heat) on the bottom

Possible to stock the well with a maximum tray height up to 65 mm

Incl. hot cough guard attachment with one-sided curved glass cover and side round-tube struts Ø 38 mm - permanently installed on the hotplate

Supporting heat including heat-resistant double lighting

Width:	925
Depth:	657
Height:	575
Power input hot:	1,68 kW
Voltage volt:	230V
Frequency Hz:	50Hz

Typing and database errors reserved.

#### IDEAL Kältetechnik GmbH

📍 In der Schörihub 28, 4810 Gmunden, AT

☎ +43 7612 660 61

✉ office@ideal-ake.at

#### AKE Ausseer Kälte- und Edelstahltechnik GmbH

📍 Pichl 66, 8984 Bad Mitterndorf, AT

☎ +43 3624 211 00

✉ office@ake.at