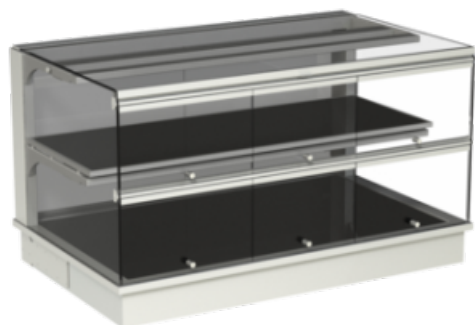


# W GE-112-53 KL Heated display case - CS flip-up d., OS folding d.



**€8,596.00**

plus VAT

**Item no.:** EU530232

Heated display case with dry heat

Glass enclosure: squared design with normal glazing

Customer side: Removal flaps made of acrylic glass;

Completely made of stainless steel, all visible sides polished

Polyurethane rigid foam insulation (compression-moulded)

Hotplate (primary heat) on all presentation areas

Supporting heat including heat-resistant lighting per presentation area

Electronic controller with digital temperature display

Modell:	squared
Width:	1125
Depth:	695
Height:	630
Installation Opening width:	1105
Installation Opening depth:	670
Power input hot:	1,75 kW
Voltage volt:	230V
Frequency Hz:	50Hz
Energy consumption kWh 24h:	17,0600

Typing and database errors reserved.

**IDEAL Kältetechnik GmbH**

📍 In der Schörihub 28, 4810 Gmunden, AT

☎ +43 7612 660 61

✉ office@ideal-ake.at

**AKE Ausseer Kälte- und Edelstahltechnik GmbH**

📍 Pichl 66, 8984 Bad Mitterndorf, AT

☎ +43 3624 211 00

✉ office@ake.at