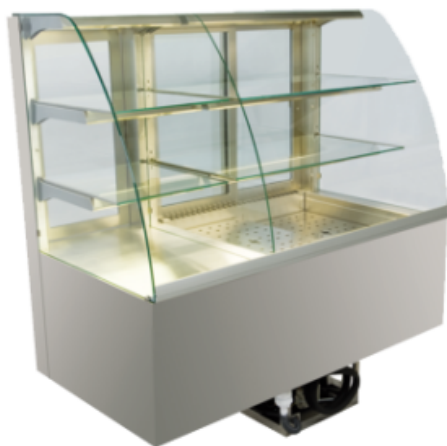


## KGU GR-152-70-E PRO Combo display,cold - not refrigerated: self-contained



**€10,864.00**

plus VAT

**Item no.:** EU513361

CURVED VERSION "PRO" All visible sides polished. Entirely made of stainless steel, coated evaporator, fully automatic defrosting and evaporation of condense water, ventilated cooling unit bolted to the base of the unit; Service side: Refr. part with sliding, insulated glass doors (left), ambient part open (right); Customer side: panorama glass pane made of safety glass; 2 shelves per part made of glass adjustable in height, internal lighting on each level, incl. deep well with base trays adjustable in height, incl. control unit with digital temperature display, Temperature range: Air 5°C / Product M2 / 3 Voltage: 203 V / 50 Hz, 598 Watt Dim.: (WxDxH) 1515x695x680/1375 mm

Modell:	curved
Width:	1515
Depth:	695
Height:	1375
Version:	E
Power input cold:	436 Watt
Installation Opening width:	1065
Installation Opening depth:	670
Voltage volt:	230
Frequency Hz:	50
Refrigeration :	R134a
Cooling capacity:	520 Watt at VT -8°C
Energy consumption kWh 24h:	5,3800

Typing and database errors reserved.

**IDEAL Kältetechnik GmbH**

📍 In der Schörihub 28, 4810 Gmunden, AT

☎ +43 7612 660 61

✉ office@ideal-ake.at

**AKE Ausseer Kälte- und Edelstahltechnik GmbH**

📍 Pichl 66, 8984 Bad Mitterndorf, AT

☎ +43 3624 211 00

✉ office@ake.at