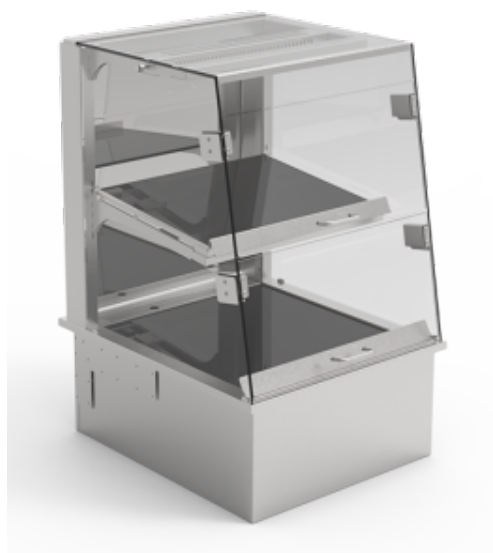


# Hot Flaps 70 Heated display case - CS soft close flip-up doors



**€7,732.00**

plus VAT

**Item no.:** EU512700

Heated display case including 3 heat sources (moist heat, infrared supporting heat, primary heat)  
 Glass enclosure: oblique design with normal glazing  
 Customer side: Removal flaps made of normal glass with soft-close system;  
 Completely made of stainless steel, all visible sides polished  
 Inner well welded tight in a hygienic design  
 Air humidification via heated water tray in the bottom (controllable with 3 levels)  
 Manual water top-up with alarm display (visual and acoustic)  
 Hotplate (primary heat) on the bottom  
 Supporting heat including heat-resistant lighting per presentation area  
 Digital pictogram control (7 programs)  
 Cleaning-friendly glass enclosure  
 Price tag holder on all presentation levels

Width:	600
Depth:	710
Height:	965
Installation Opening width:	580
Installation Opening depth:	670
Power input hot:	1,64 kW
Voltage volt:	230V
Frequency Hz:	50Hz

Typing and database errors reserved.

**IDEAL Kältetechnik GmbH**

📍 In der Schörihub 28, 4810 Gmunden, AT  
 ☎ +43 7612 660 61  
 ✉ office@ideal-ake.at

**AKE Ausseer Kälte- und Edelstahltechnik GmbH**

📍 Pichl 66, 8984 Bad Mitterndorf, AT  
 ☎ +43 3624 211 00  
 ✉ office@ake.at