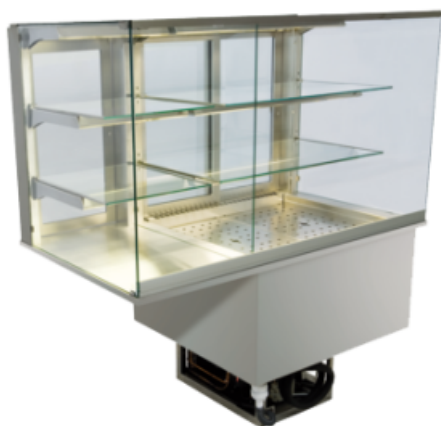


KGU GE-120-70-E Combo display,cold - not refrigerated: self-contained



€8,502.00

plus VAT

Item no.: EU511360

SQUARED Entirely made of stainless steel, coated evaporator, fully automatic defrosting and evaporation of condense water, ventilated cooling unit bolted to the base of the unit; Service side: Refr. part with sliding, insulated glass doors, ambient part open; Customer side: glass pane made of safety glass; 2 shelves made of glass adjustable in height, internal lighting on each level, incl. deep well with base trays adjustable in height, incl. control unit with digital temperature display, Temperature range: Air 5°C / Product M2 / 3 Voltage: 203 V / 50 Hz, 568 Watt Dim.: (WxDxH) 1200x695x700/1375 mm

Modell:	squared
Width:	1200
Depth:	695
Height:	1375
Version:	E
Power input cold:	418 Watt
Installation Opening width:	740
Installation Opening depth:	670
Voltage volt:	230V
Frequency Hz:	50Hz
Refrigeration :	R134a
Cooling capacity:	520 Watt at VT -8°C

Typing and database errors reserved.

IDEAL Kältetechnik GmbH

📍 In der Schörihub 28, 4810 Gmunden, AT
 ☎ +43 7612 660 61
 ✉ office@ideal-ake.at

AKE Ausseer Kälte- und Edelstahltechnik GmbH

📍 Pichl 66, 8984 Bad Mitterndorf, AT
 ☎ +43 3624 211 00
 ✉ office@ake.at