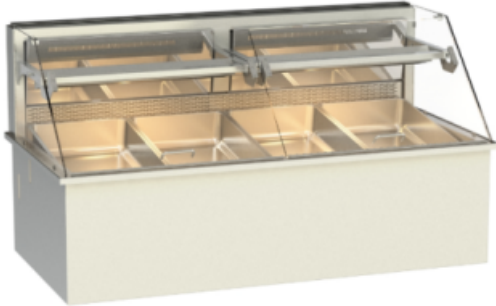


## Salatbar GN 4-1-E Single Switch Built-in Refrigerated Display Case: self contained



**€13,949.00**

plus VAT

**Item no.:** EU386044

Glass enclosure: oblique design with normal glazing  
Display case with switch function for quick switchover possibility between cold and hot operation (optimally adjusted for 24/7 operation)  
Completely made of stainless steel all visible sides polished  
Inner well welded tight in a hygienic design  
Polyurethane rigid foam insulation (compression-moulded)  
coated fin coil evaporator with circulating air – can be folded up with pressure-relief for cleaning  
speed-controlled low-voltage fan  
Heating mode: with supporting heat and primary heat  
electronic controller with digital temperature display  
fully-automatic defrosting  
deep-drawn condensate drain HD 30  
interior lighting on the cover

Typing and database errors reserved.

**IDEAL Kältetechnik GmbH**

📍 In der Schörihub 28, 4810 Gmunden, AT

☎ +43 7612 660 61

✉ office@ideal-ake.at

**AKE Ausseer Kälte- und Edelstahltechnik GmbH**

📍 Pichl 66, 8984 Bad Mitterndorf, AT

☎ +43 3624 211 00

✉ office@ake.at

Width:	1415
Depth:	695
Height:	1103
Version:	E
Power input cold:	411 Watt (kalt)
Installation Opening width:	1390
Installation Opening depth:	670
Inner well width:	1305
Inner well depth:	535
Inner well height:	130
Power input hot:	3,08 kW (w
Voltage volt:	230V
Frequency Hz:	50Hz
Refrigeration :	R134a
Cooling capacity:	590 Watt at VT -6°C
Energy consumption kWh 24h:	17,7600

Typing and database errors reserved.

#### IDEAL Kältetechnik GmbH

📍 In der Schörihub 28, 4810 Gmunden, AT  
 ☎ +43 7612 660 61  
 ✉ office@ideal-ake.at

#### AKE Ausseer Kälte- und Edelstahltechnik GmbH

📍 Pichl 66, 8984 Bad Mitterndorf, AT  
 ☎ +43 3624 211 00  
 ✉ office@ake.at