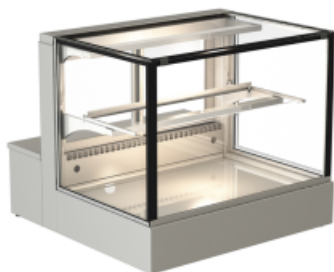


## Green AE-60-65-E Countertop refrigerated display case: self-contained



**€5,172.00**

plus VAT

**Item no.:** EU351250

SQUARED Entirely made of stainless steel, 24 Volt fan, fully automatic defrosting and evaporation of condense water, Ventilated cooling unit included, Service side: sliding doors made of insulated glass, Customer side: glass pane made of insulated glass, 1 shelf made of glass adjustable in height, internal LED lighting on each level, with condensing unit at service side and control unit with digital temperature display

Temperature product: (M2) -1 to +7°C (at +25°C and 60%)

Temperature Air: +5°C

Voltage: 230 V 50 Hz / 306 Watt

DIM.: (WxDxH) 600 x 800 x 655 mm

Modell:	squared
Version:	E
Power input cold:	207 Watt
Inner well width:	490
Inner well depth:	465
Voltage volt:	230
Frequency Hz:	50
Refrigeration :	R134a
Cooling capacity:	310 Watt at VT -10°C

Typing and database errors reserved.

**IDEAL Kältetechnik GmbH**

📍 In der Schörihub 28, 4810 Gmunden, AT

☎ +43 7612 660 61

✉ office@ideal-ake.at

**AKE Ausseer Kälte- und Edelstahltechnik GmbH**

📍 Pichl 66, 8984 Bad Mitterndorf, AT

☎ +43 3624 211 00

✉ office@ake.at