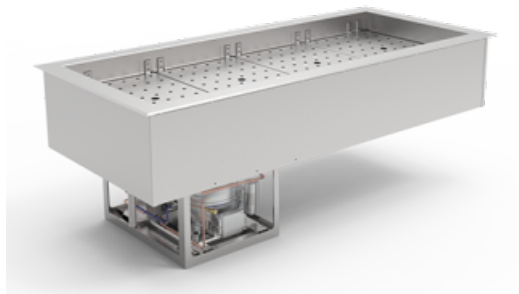


EBS 4-1-E R290 Built-in refrigerated well (static cooling): self-contained



€4,128.00

plus VAT

Item no.: EU253341

Completely made of stainless steel
 All visible sides polished
 Inner well welded tight in a hygienic design
 Static cooling through contact tubing
 Deep-drawn condensate drain HD 30
 Electronic controller with digital temperature display
 Fully-automatic condensate evaporation

Width:	1367
Depth:	596
Height:	540
Version:	E
Power input cold:	147 Watt
Installation Opening width:	1377
Installation Opening depth:	607
Inner well width:	1280
Inner well depth:	508
Inner well height:	210
Net content liters:	136
Annual energy consumption kWh:	1029,3000
Voltage volt:	230V
Frequency Hz:	50Hz
Refrigeration :	R290
Cooling capacity:	330 Watt at VT-10°C
Energy consumption kWh 24h:	2,8200

Typing and database errors reserved.

IDEAL Kältetechnik GmbH

In der Schörihub 28, 4810 Gmunden, AT
 +43 7612 660 61
 office@ideal-ake.at

AKE Ausseer Kälte- und Edelstahltechnik GmbH

Pichl 66, 8984 Bad Mitterndorf, AT
 +43 3624 211 00
 office@ake.at