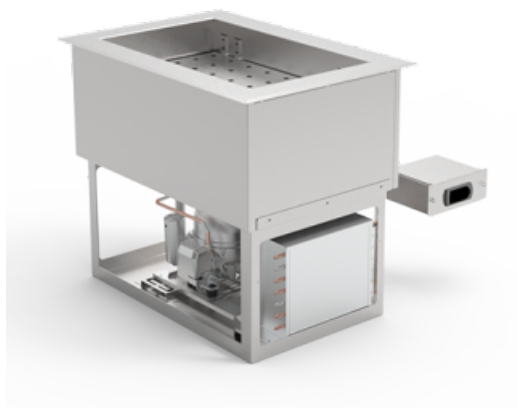


EBS 1-1-E R290 Built-in refrigerated well (static cooling): self-contained



€2,637.00

plus VAT

Item no.: EU253301

Completely made of stainless steel
 All visible sides polished
 Inner well welded tight in a hygienic design
 Static cooling through contact tubing
 Deep-drawn condensate drain HD 30
 Electronic controller with digital temperature display
 Fully-automatic condensate evaporation

Width:	392
Depth:	596
Height:	540
Version:	E
Power input cold:	136 Watt
Installation Opening width:	402
Installation Opening depth:	607
Inner well width:	305
Inner well depth:	509
Inner well height:	210
Annual energy consumption kWh:	952,6500
Voltage volt:	230V
Frequency Hz:	50Hz
Refrigeration :	R290
Cooling capacity:	190 Watt at VT -10°C
Energy consumption kWh 24h:	2,6100

Typing and database errors reserved.

IDEAL Kältetechnik GmbH

📍 In der Schörihub 28, 4810 Gmunden, AT

☎ +43 7612 660 61

✉ office@ideal-ake.at

AKE Ausseer Kälte- und Edelstahltechnik GmbH

📍 Pichl 66, 8984 Bad Mitterndorf, AT

☎ +43 3624 211 00

✉ office@ake.at